

CMCKUHNKE



CMC-KUHNKE AUTO-XTS

If you work with metal cans, the Industrial Physics CMC-KUHNKE AUTO-XTS will increase the accuracy and speed of your testing and inspection processes and reduce spoilage, saving you time and money.

CMC-KUHNKE AUTO-XTS

Our popular, fully automatic and non-destructive double seam inspection system is IP54 rated. Smart, safe and sustainable, it can be attached to the conveyor of any canning line, or used as a stand-alone device.

Fire up the CMC-KUHNKE AUTO-XTS to measure cans in a fraction of the time. The proven, patented technology of our zero-waste solution lets you measure more cans without spoilage. So you can send more products out of the door to your customers.

Imagine your canning line powered up with a high-tech robot handling system. Effortlessly, methodically moving your cans through a series of measurement stations and checks.

Your process gets much faster, less labor is needed and it's safer: your people are now protected from seam saws, metal burrs or seam teardowns.



Simply load your cans into the device and we'll take it from there.

Station #1

CMC-KUHNKE's Triple Seam Gauge (TSG) checks your cans for measurements including countersink and seam thickness in up to 36 positions around the can. Average can height is optional.

Station #2

Our safe, low-power SEAMscan X-ray Tightness Scanner (XTS) measures the internal parameters of the seam, including the tightness. The machine offers excellent shielding (TÜV Rheinland tested to < 0.1 mSv per year) and the contents of your cans are unaffected by the scan.

Station #3

Now the double seam inspection is complete, your cans are placed back onto the conveyor in the same order they came in. For online systems, the cans are automatically fed back into the line. Rejected cans are placed into a carrying basket and can be held for additional testing.

Our powerful Visionary QC™ Pro SPC software collects data, which is instantly available for statistical analysis and presented in an easy-to-read and understand touch-screen format. It can also trigger alarms to make sure potential defects are communicated immediately, so that the operators can make any necessary adjustments to the line.

Worried about your environmental impact? Installing the AUTO-XTS in your workplace you can significantly lower your CO2 footprint, while offering a product footprint saving of 170g/can* ≈ 2T/year (12K cans/year).

Many of the world's largest multinationals in the beverages and beer sectors rely upon the CMC-KUHNKE's XTS technology. They know it is safer, faster and it saves them money. Get in touch today and we can tell you more about this fantastic machine and how Industrial Physics can help you too.

Technical Details

Can Specifications:	2 end diameters (200 and 202 or 202 and 204), varying can heights and body diameters
Air Pressure Required:	5-10 bar (73-145 psi), filtered dry air, max flow 35 SCFM
Electrical Required:	100-240VAC 50-60Hz, average power consumption 600W
Resolution:	0.01 mm (0.0004 in)
Dimensions:	260 x 200 x 120 cm (102 x 79 x 48 in)
Weight:	480 kg (1058 lbs)
Crated Dimensions:	300 x 180 x 150 cm (118 x 71 x 60 in)
Crated Weight:	600 kg (1323 lbs)
Measurement Units:	mm, in
Output Interface:	RS232
Languages:	English, Spanish, Chinese, German
Characteristics:	Seam Thickness, Countersink Depth, Seam Height, Body Hook, Cover Hook, Overlap, Seam Gap,% Tightness (360° scan) % Primary Sealing Area, Can Height
Connectivity Required:	Connection to LAN (RJ45), 1 fixed IP Address (for external database access)



Seam Inspection & Other Metal packaging Solutions

We don't just inspect seams. Industrial Physics offers unique testing equipment to ensure the integrity of the metal packaging at different point in the production and filling process:

- Abrasion Testing
- Can Testing & Measurement
- Crush Testing
- Hardness Testing
- Head Space Analysis
- Inline Inspection
- Non-destructive Seam Inspection
- Traditional Seam Inspection

Who are we

Industrial Physics is a global test and inspection partner. And we protect the integrity of some of the biggest brands and manufacturers on the planet.

But how do we do this? By providing first-class test and inspection solutions that assure the quality of your packaging, materials and coatings.

Thanks to our global network of technical and support experts, advanced technology, and almost 100 years experience, we're able to provide trusted solutions to businesses all over the world.

At Industrial Physics, we've combined the strength of 12 of the world's leading inspection brands – so when you choose us as your test and inspection partner, you'll get access to an unrivalled product portfolio that you won't find anywhere else.

No matter the size or location of your business, we're here to safeguard your reputation.

Providing solutions across a range of applications

Our instruments can measure more than 50 discrete properties based on international testing standards, including:

- Adhesion, release and tack
- Burst testing
- Coefficient of friction (COF)
- Compression & tension testing
- Compression strength and crush resistance
- Corrosion
- Gage and/or bulking properties
- Gloss testing
- Headspace
- Internal bond strength
- Leak detection
- Leak detection
- Permeation
- Printability and print quality
- Product thickness
- Rub and wear resistance
- Seam Inspection
- Tensile strength; impact resistance
- UTMs
- Viscosity

About Industrial Physics

010101
010101
010101

**Innovative
Technology**

Testing &
Inspection
in...



20,000+
Customers



15 Industries
40 Applications
22 Materials



Over

300
People

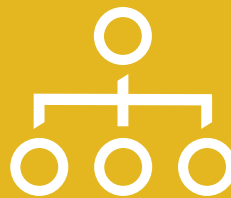


Customers
in **75**
Countries

12
Brands



Global
Distribution
Network



Get in touch

To find out more about how we can support your unique needs, get in touch today.

Email: info@industrialphysics.com

industrialphysics.com/product/auto-xts/