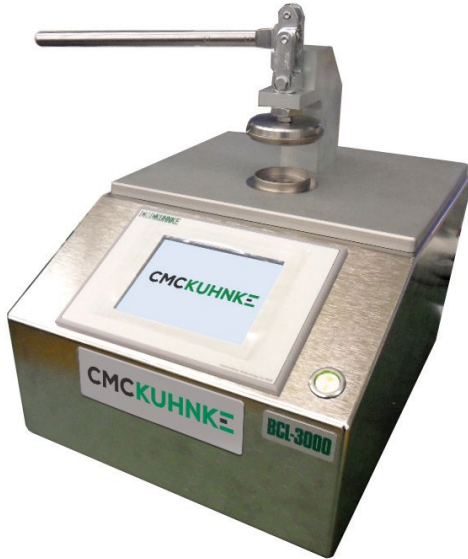


BCL-3000L Series

Buckle Tester for Loose Beverage Ends



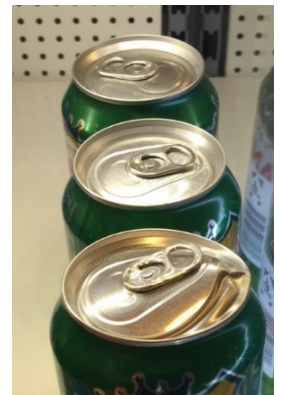
The BCL-3000L Series measures the pressure at which loose beverage ends buckle.

Models available for easy open ends, peel seal ends or beverage ends.

A manual clamping device is used to secure the end in place, and pressure is increased until the end buckles.

Don't let this happen to our ends!

The buckle value is shown on the color touch screen and may be saved. Results are also available for transfer either directly into a plant-wide data collection system or for transfer directly into Visionary QC™ or other data acquisition software.



This tester uses CMC-KUHNKE's latest Quick-Fill Technology. Quick-Fill is a unique time saving feature designed to decrease test time while maintaining the accuracy of the test. Testers with Quick-Fill can rapidly increase the test pressure from atmosphere to a preset amount. Once at the starting pressure the tester automatically reduces the fill rate in order to maximize accuracy.

Benefits

- May be used with multiple diameters - change parts may be exchanged in seconds.
- Robust Design
- Easy to use and requires little to no training

Technical Details

Air Pressure Required: 10 bar

Characteristics Measured: Buckle Pressure

Electrical Power Required: 24V-120 / 230 VAC 50-60Hz

Max Test Pressure: 10 bar (Pressure booster required, if only 6 bar in plant available)

Output Interface: RS 232

Size: 300mm x 300mm x 360mm

Marks Allocation: 1-20

Languages: English/German/Chinese/French

Max Size: 209 (63 mm) beverage end

WWW.CMC-KUHNKE.COM

GERMANY
Tel. +49 30-2300-66-0
sales@cmc-kuhnke.de

UNITED STATES
Tel. +1 518-694-3310
sales@cmc-kuhnke.com

MEXICO
Tel. +52 55 4203 6820
sales@cmc-kuhnke.com.mx

CHINA
Tel. +400-821-0694
info.china@industrialphysics.com