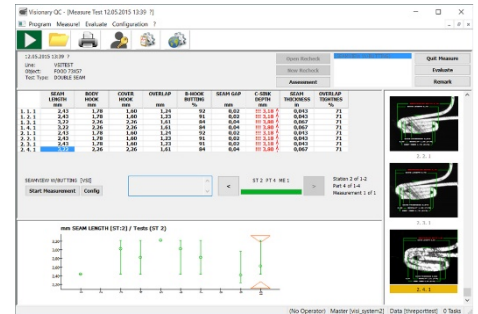
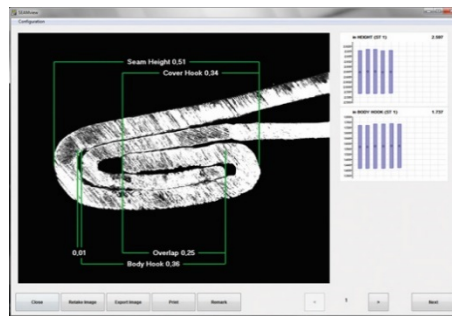


## SSW-1 SEAMscan SPC System for Beverage

The SEAMscan SPC System is an affordable, high-resolution tool for double seam inspection and measurement with SPC Reporting.

**Measures:** Double Seam Inspection: Seam Thickness, Seam Height, Countersink Depth, Seam Gap, Body Hook, Cover Hook, Overlap



## Benefits

- **Saves Time:**
  - Capture, measure & save seam images in less than 1 second!
  - Automatic transfer of data
  - Tailored Inspections lead operators through process
- **Highly Accurate:**
  - Eliminates Operator Bias
  - In-depth analysis for advanced statistical process control (SPC)
- **Customizable Packages**
  - Tailor to your budget
  - Modular Software to meet your needs
  - From stand-alone to fully-networked systems

## Features

The SEAMscan Package includes:

- **Video Seam Imager** - VSI Models for Food, Beverage, Aerosol, General Line or Oil Filters
  - Clearly illuminates & captures images of seams
  - High-resolution USB camera & precision optics
  - Rugged and reliable
  - Integrated Multiplexer for connecting up to 6 additional gauges
- **SEAMview Inspection Software**
  - Capture, measure & save seam images in < 1 second!
  - Customize inspection screens
  - Zoom Function
  - Compare to specifications with colored alerts
  - E-mail image files or use in a report document

- **Visionary SPC Software**

- Easy-to-use Statistical Process Control for quick analysis of can inspection data
- Flexible, Secure Database
- Intuitive Inspection Reports may be shared and exported
- Track trends and statistics with SPC Graphs

Accessories available to provide complete double seam measurement: Manual Seam Thickness Gauge, Manual Countersink Depth Gauge, Seam Stripper, Automatic Seam Saw

## Technical Details

<b>Characteristics:</b>	Double Seam Inspection: Seam Thickness, Seam Height, Countersink Depth, Seam Gap, Body Hook, Cover Hook, Overlap
<b>Max Size:</b>	Video Seam Imagers available for Food Cans, Beverage Cans, Aerosol Cans of any height and diameter
<b>Electrical Required:</b>	100-240VAC 50-60Hz
<b>Output Interface:</b>	USB 3.0
<b>Languages:</b>	English, Spanish, Chinese, German, Russian, Japanese, Portuguese